



DISTRIBUTORS & CONSOLIDATORS OF AMERICA

A North American Network of asset based companies providing consolidation, distribution, warehousing, transportation and 3PL solutions.



2023

www.dacacarriers.com



LEONARD'S GUIDE

LEONARD'S GUIDE

LOGISTICS • TRUCKING • WAREHOUSING



Leonard's Guide has been serving the freight transportation industry since 1912, and is the leading provider of print and online information on North American Trucking, Warehousing, Third Party Logistics, and Air Cargo Companies.

Manufacturers, shippers, carriers and other industry professionals around the world rely on **Leonard's Guide** as their source for comprehensive, accurate, and up-to-date information on freight transportation and warehouse companies.

LEONARD'S GUIDE ONLINE



Free RFP Feature

- Search for companies that provide the service you need.
- One click and your request for rate/service information is sent to multiple service providers.

Contact us today for more information, or to list your company and services.

800-574-5250

www.leonardsguide.com



United States

Alaska	Lynden Transport, Inc.	6
California	Frontline Freight Inc.	7
Hawaii	Honolulu Freight Service	8
Illinois	Moran Transportation Corporation	9
Massachusetts	Fowler's Express	10
Michigan	Automated Logistics Systems, LLC	11
Michigan	Davis Cartage	12
Minnesota	King Solutions, Inc.	13
Missouri	ITF Group	14-15
Missouri	NOTS Logistics	16
New York	Speed Global Services	17
North Dakota	Midwest Motor Express	18
Ohio	Cleveland Delivery	19
Pennsylvania	A. Duie Pyle, Inc.	20
Pennsylvania	Maple Logistics Solutions	21

Canada

Ontario	Polaris Transportation Group	23
---------------	------------------------------------	----



DISTRIBUTORS & CONSOLIDATORS OF AMERICA



A North American Network of asset based companies providing consolidation, distribution, warehousing, transportation and 3PL solutions.

Distributors and Consolidators of America is composed of privately owned, fiscally sound corporations located throughout North America. We offer an infinite variety of transportation and warehousing services. DACA is a ready resource for valuable distribution alternatives.

What DACA can do for you!

Provide flexible, personalized and immediate response to your most challenging distribution problems. DACA has many years of experience and can effectively design services to meet any requirement.

- Assembly & Distribution
- Bar Code Scanning
- Bonded Cartman & Carrier
- Dedicated Fleet Services
- Bonded Warehousing
- Container Storage
- Contract Carrier Authority
- Driver & Equipment Leasing
- Driver Management Services
- Home Deliveries
- In-House Custom Services
- LTL & TL Services
- Order Picking
- Pick & Pack and Ticketing
- Piggyback Drayage
- Protective Services
- Specialized Equipment
- Specialized Material Handling
- Tailored Distribution Programs
- Warehousing

Driving with more power for our members.

Our newly upgraded website offers more power to our members with user friendly navigation so potential customers can find your company and services with ease. Customers are able to search by company name, services or areas served. Now SEO friendly on all mobile devices so you get more power for search engines to find your company and help you grow.



Let DACA help you get more driving power now.

For more information visit us on the web at

www.dacacarriers.com

or contact us at

717-764-6531



North American Locations

New England

Boston, MA
Fowler's Express
Tim Foster • 800-633-6103

Middle Atlantic

Buffalo, NY
Speed Global Services
Carl Savarino • 716-876-2235 x1700

Philadelphia, PA
A. Duie Pyle, Inc.
Russ Miceli • 800-523-5020

York, PA
Maple Logistics Solutions
Chris Benyovszky • 717-764-4596

North Central

Chicago, IL
Moran Transportation
Michael D. Moran • 847-439-0000

Jackson, MI
Automated Logistic Services, LLC
Joe Parker • 800-551-9399

Corunna, MI
Davis Cartage
Glen Merkel • 800-521-0001 x251

Rogers, MN
King Solutions, Inc.
Cassie Stang • 763-428-1921

Hazelwood, MO
ITF Group
Doni Burkhan • 800-642-5436

St. Louis, MO
NOTS Logistics
Kevin J. Brink • 877-477-9677

Bismarck, ND
Midwest Motor Express, Inc.
John Slavik • 303-405-3905

Cleveland, OH
Cleveland Delivery
Tom Wagner • 216-641-7793 x201

Pacific

Santa Fe Springs, CA
Frontline Freight, Inc.
Matt Hunter • 800-243-5422 x102

Alaska

Anchorage, AK
Lynden Transport
Steve Hartmann • 800-426-5702

Hawaii

Honolulu, HI
Honolulu Freight Service
Raymond Rodriguez • 800-777-4963

Canada

Mississauga, ON
Polaris Transport Carriers, Inc.
David Cox • (800) 409-2269

A comprehensive transportation and distribution management provider
Updated as of 1/1/2023

The listings of DACA member locations above reflect their main corporate contact. Many DACA members have various facilities throughout the U.S. and North America. Refer to their listing page or the DACA website for additional locations.

For more information visit us on the web at www.dacacarriers.com or contact us at **717-764-6531**





DISTRIBUTORS & CONSOLIDATORS OF AMERICA

Alaska & Alberta Canada

Lynden Transport, Inc.

18000 International Blvd., Suite 800
Seattle, WA 98188
Phone 206-575-9575 • 800-426-5702
www.ltia.Lynden.com
transales@ltia.Lynden.com



Principal Contacts:

Jeff Yokoyama, Corporate Account Manager
yokoyama@lynden.com

Paul Friese, Vice President, Alaska Sales
paulf@lynden.com

Steven M. Hartmann, Vice President, Sales & Marketing
steveh@lynden.com

Service Centers

Anchorage Service Center (Open 24/7)

3027 Rampart Drive, Anchorage, AK 99501
Phone: 907-276-4800 • Fax: 907-257-5160
Toll free 800-327-9390

Alaska Gateway Service Center

5410 12th Street East, Fife, WA 98424
transales@lynden.com
Phone: 253-926-7200 • Fax: 253-926-7201
Toll free 800-326-5702

Services Offered:

- Assembly and Consolidation
- EDI
- LTL Services
- TL Services
- Heavy Haul
- Temperature Control
- Pool Distribution
- Oilfield and Hotshot
- Motor vessel service
- Container barge
- Highway schedules
- Complete electronic commerce services
- Warehousing
- Predictive Delivery

Areas Served:

- Alaska
- Alberta, Canada

Alaska Service Centers

Anchorage	Juneau	Prudhoe Bay
Cordova	Kenai	Sitka
Craig	Ketchikan	Skagway
Fairbanks	Kodiak	Tok
Haines	Palmer/Wasilla	Wrangell
Glennallen	Petersburg	

National

Los Angeles	Houston
310-816-6391	281-443-4200
800-675-9633	800-231-0582
Portland	Dallas
360-256-2998	972-399-6401
800-214-6748	800-201-0457

Canada

Calgary
403-203-3554
800-394-2766
Edmonton
780-960-9444
800-661-9006



California

Frontline Freight, Inc.



240 S. 6th Avenue
City of Industry, CA 91746
Toll Free: 800-243-5422
Fax: 562-236-1457
www.frontlinefreightinc.com

Principal Contacts:

Matt Hunter, President
matth@frontlinefreightinc.com
800-243-5422 ext 102

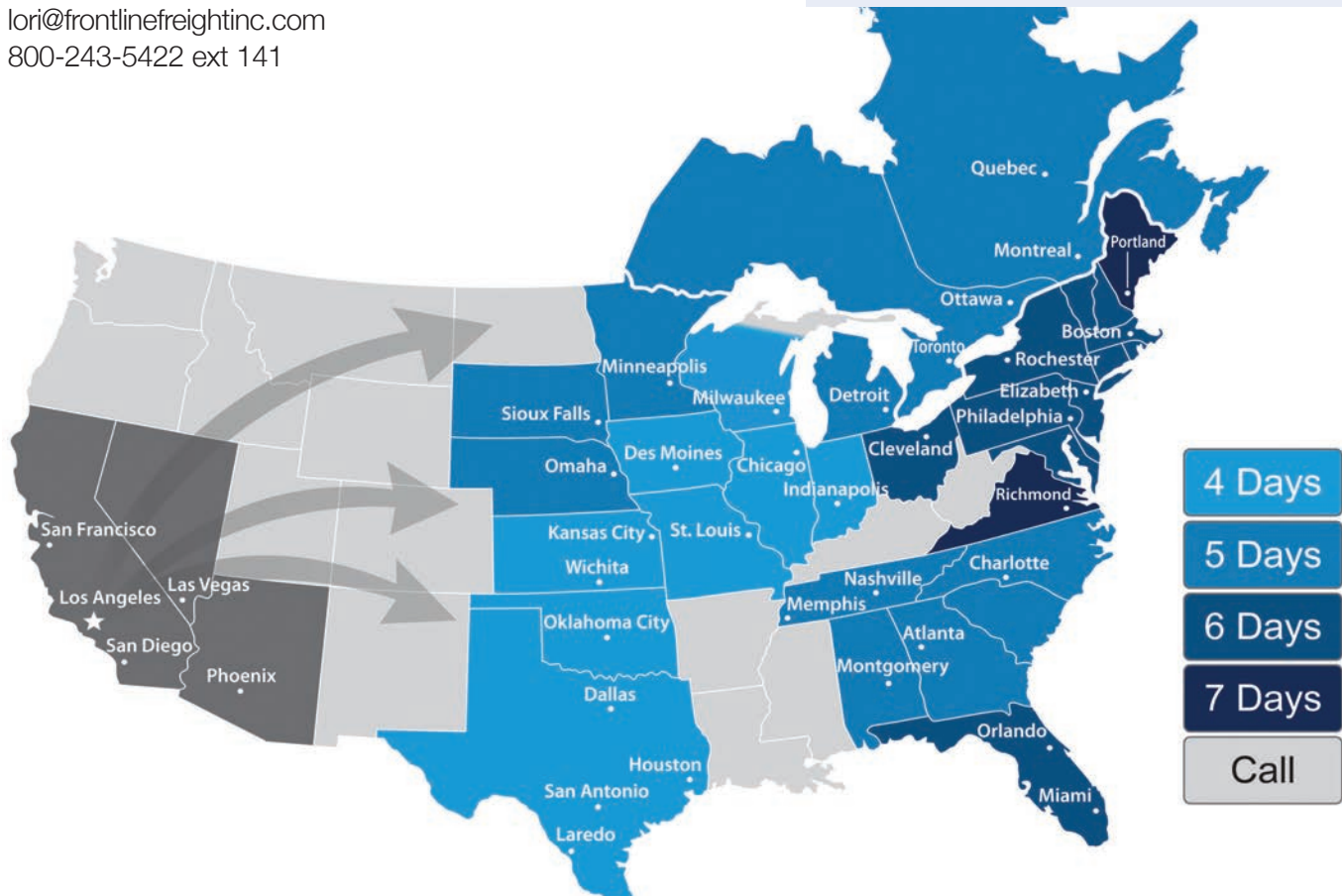
Lori Hooper, Executive Vice President of Sales and Strategy
lori@frontlinefreightinc.com
800-243-5422 ext 141

Services Offered:

- LTL
- Volume
- Deconsolidation
- Warehousing
- Transloading
- Crossdock
- Distribution

Areas Served:

- Nationwide





Honolulu Freight Service

1400 Date Street
Montebello, Calif. 90640
Phone 800-777-4963
Fax 323-887-6776
www.honolulufreightservice.com



Honolulu Freight Service



Principal Contacts:

Mike Beidleman, President
Raymond Rodriguez, Vice President of Sales & Marketing
828-527-9289
rrodriguez@hfsnet.com

Terminals

Los Angeles, CA
Raymond Rodriguez, Vice President of Sales & Marketing
Phone 828-527-9289 Fax 323-887-6776
rrodriguez@hfsnet.com

Tacoma, WA
Kim Tanudra, Terminal Manager
Phone 800-216-0582 Fax 206-625-9625
ktanudra@hfsnet.com

Portland, OR
Kim Tanudra, Terminal Manager
Phone 800-216-0582 Fax 206-625-9625
ktanudra@hfsnet.com

Oakland, CA
Randy Coon, Terminal Manager
Phone 800-576-7621 Fax 510-614-8121
rcoon@hfsnet.com

Honolulu, HI
Raymond Rodriguez, Vice President of Sales & Marketing
Phone 800-532-0258 Fax 808-843-1729
rrodriguez@hfsnet.com

Services Offered:

- Less than Container Load (LCL)
- Full Container Load (FCL)
- Assembly and Consolidation
- Trans-loading and Cross-Docking
- Refrigerated Service
- Hazardous Materials
- Logistics
- Project Cargo
- Flat Racks
- Personal Effects
- Residential Deliveries
- Container Drayage
- Warehousing
- Oversized commodities
- Specialized Equipment

Areas Served:

- Hawaiian Islands and Guam

Islands served:

- Oahu
- Maui
- Kauai
- Hawaii
- Molokai
- Lanai
- Guam



Illinois

Moran Transportation Corporation

2401 Arthur Avenue
Elk Grove Village, IL 60007
Phone 847-439-0000
Fax 847-439-0047
www.morantransportation.com



Winners of the Logistics Management Quest for Quality in 2022, 2019, 2017, 2016 and 2015

Principal Contact:

Michael D. Moran
mdmoran@morandist.com



LTL SERVICE AREA NETWORK TERMINALS:

- Elk Grove Village, IL
- Rockford, IL
- Bloomington, IL
- Elkhart, IN
- Fort Wayne, IN
- Indianapolis, IN
- St. Louis, MO
- Minneapolis, MN



Services Offered:

Moran Transportation Corporation

- Complete inbound and outbound
- LTL support programs
- LTL transportation: Local and Midwestern
- Liftgate and Inside delivery specialists
- Residential Delivery
- Dedicated cartage programs
- Logistics and Third Party Services
- Pool distribution
- Retail Pool Distribution

Equipment:

- 325 tractors & Straight trucks
- 415 trailers
- 175 liftgate equipped trucks & trailers

Terminals:

Chicago (IL), Rockford (IL), Elkhart (IN), Fort Wayne (IN), Indianapolis (IN), Bloomington (IL), St Louis (MO), Minneapolis (MN)





Massachusetts

Fowler's Express, Inc. Distribution & Warehousing

Corporate Address:

200 Millenium Circle
Lakeville, MA 02347
800-633-6103
508-946-3402
www.fowlersinc.com



Principal Contacts:

Tim Foster

Vice President Operations

customerservice@fowlersinc.com

Fowler's Express was founded in 1942 by Vernon Fowler of Whitman, MA. The company was incorporated in 1973 and operated one truck serving the greater Boston Metropolitan area. Their vehicles are cell phone dispatched and GPS equipped to provide an immediate response to their customers' requests. The company moved to a new facility in 2010, to accommodate our growing warehouse & distribution operations.

Our commitment to customer satisfaction remains our top priority. Technology is continuously being advanced. Inquiries are handled quickly and accurately by a staff of dedicated customer service professionals committed to providing you with the best warehousing services possible. Our customer base is localized and it includes many well-known national and fortune 500 companies.



Services Offered:

- Warehousing Services
- Contract Carriage
- Consolidation & Distribution
- Cross Dock
- Transfer & Trans Loading
- Storage Trailer Rentals
- Container Unloading

Areas Served:

- Food Grade
- FDA Inspections
- Computer Controlled Inventory
- Air Ride Equipment
- Computerized Dispatch System
- Customizes Pricing Alternatives
- Dedicated Customer Service Professionals Committed to Total Satisfaction
- Dedicated Transport
- Document Imaging
- Expedited Delivery
- EDI Tracing & Tracking Capabilities
- GPS / Satellite Equipment Location
- JIT Delivery
- Plant & Warehouse Relocation
- Strategic Marketing & Operational Alliances Servicing Points Beyond
- Trained Hazardous Materials Specialists
- Ground Level Loading
- Pic-pak Fulliment
- Palletizing

Areas Served:

- Partner Service to the Continental United States
- Partner Service to the Provinces or Quebec & Ontario



Michigan

Automated Logistics Systems, LLC



Headquarters:

3517 Scheele Drive
Jackson, MI 49202
517-782-7500
www.automatedlogistics.com



Texas Location:

5902 Riverside Dr
Laredo, TX 78041
956-790-9200

Principal Contacts:

Joe Parker

President
jparker@automatedlogistics.com

Bob Ostrander

VP of Sales
bostrander@automatedlogistics.com

Paul McDonald

VP of Business Development
pmcdonald@automatedlogistics.com

Delivering Excellence since 1992

With warehousing and consolidation facilities in Jackson, MI and Laredo, TX, ALS offers quality value add warehouse services throughout the NAFTA region.

Services Offered:

- Warehousing
- Cost Savings
- Freight Bill Audit
- Claims Management
- Consolidated Billing
 - Part Number
 - Project Costs
 - Truck Utilization
- Shipment Planning
- In-transit Visibility
- Air Freight
- One Off
- Specialized
- Project Freight
- LTL
- Van
- Ocean Freight
- Mexican
- Riggers
- Site Manager
- Expedites
- Foreign Trade Zone

Areas served:

- Canada
- US
- Mexico



Michigan

Davis Cartage Co.

Headquarters:

230 Earl Sleseman Drive Phone 989-743-4445
 Corunna, MI 48817 Toll Free 800-521-0001
 www.daviscartage.com Fax 989-743-5756

Principal Contacts:

Glen Merkel - President & Chairman

800 521 0001 x232
 gmerkel@daviscartage.com

Kevin Nevison - Vice President of Sales

800 521 0001 x231
 knevison@daviscartage.com

Davis Cartage Co. is a family owned transportation and warehousing company. As a full-service transportation and logistics provider our scope of service can be as simple as moving a truckload across town, or moving a pallet across the globe. Our customers regularly reach out to our team of Logistics professionals as a one stop shop for their complex shipping needs.

Established in 1941, Davis Cartage Co. offers flexible warehousing solutions with facilities located throughout Central & Southwest Michigan. Our multi-client public distribution centers can be contracted on a short-term or long-term basis. We understand your fluctuating space requirements and we would welcome the opportunity to design a solution to meet your specific needs. Our Food Grade facilities combined with our asset based transportation division can provide you with quick and reliable access to your customers in the United States & Canada.

With a long history in working with the regions Food Processors and Automotive Suppliers, Davis Cartage Co. fully understands the many logistics challenges in the Great Lakes Region. We support a diverse group of manufacturers and distributors in the region by providing specialized equipment and multi-mode transportation solutions.



Services Offered:

Warehouse & Distribution

- Multiple Locations in Michigan
- Transload Services – Rail Access
- Dedicated Warehouse Transportation Fleet
- Michigan 8 Axle Heavy Haul Trailers for Warehouse Transfers
- Sequencing
- Pick & Pack
- Cross Dock & Consolidation
- Quality Inspections
- Reverse Logistics
- Vendor Managed Inventory (VMI)
- Fulfillment
- AIB Food Grade Certified Facilities
- Climate Controlled Facilities

Transportation Services Available

- | | |
|----------------------|-----------------------|
| ■ Intra Michigan | ■ Intermodal |
| ■ Truckload Services | ■ 8 Axle Dry Van |
| ■ LTL Services | ■ Heavy Haul Trailers |
| ■ Flatbed | (up to 100,000 lbs) |

Areas Served:

We run company equipment within Michigan, Indiana, Ohio, Illinois, Wisconsin, New York, and Southwest Ontario – Canada.

Warehouse Service Centers

(750,000 square feet)

- Corunna MI, ■ Mason MI ■ Saginaw MI
- Owosso MI ■ Niles MI



Minnesota

King Solutions, Inc.

11011 Holly Lane N.
Dayton, MN 55369
Phone 763-428-5464
800-728-8632
Fax 763-428-1625
www.kingsolutionsglobal.com

Principal Contacts:

Cassie Stang

Business Development
Direct: 763-424-1921
Cassie.stang@kingsolutionsglobal.com



KINGSOLUTIONS

Our New Warehouse in Dayton, MN

- **Opened in February 2019**
- **101,000 sq ft of temperature-controlled space cGMP (current good manufacturing practice) compliant**

ALL UNDER OUR ROOF.

Not only can we streamline the process at your facility, we can take on your whole operation at ours. Our locations in Dayton, MN and Chicago, IL feature a combined footprint of over 500,000 sq ft of space. And in keeping with our Thinking Green initiative, the space is fully equipped with energy-efficient motion-sensor lighting and video surveillance.



Services Offered:

- **Transportation Management**
- **Freight Consolidation**
- **USPS Destination Entry**
- LTL
- Truckload
- Intermodal
- Expediting
- Final Mile
- Date Specific Delivery
- Project Management
- Fulfillment
- Warehousing
- cGMP
- Pool Distribution
- Retail Distribution
- Business Intelligence
- Freight Audit
- GPS Tracking
- Technology Solutions
- Claims Management

Areas Served:

- Nationwide
- Global Logistics Services



Missouri

ITF Group

11990 Missouri Bottom Road
Hazelwood, MO 63402
877.477.9677 | 334.492.2327
www.itfgroup.com



Principal Contacts:

Sam Burkhan, CEO

sburkhan@itfgroup.com

Doni Burkhan

VP of Business Development
doni@itfgroup.com

Ilham Aghayev

COO
aliam@itfgroup.com

ITF Group is an asset-based 3PL with over 250 trucks and 1500 trailers. Our innovative freight technology partner HaulerHub streamlines every step of the supply chain cheaper, faster, and smarter. Our technology lets our customers control costs, movement, and scheduling.

Freight

Between our trusted carriers and our very own fleet, we keep your shipments moving—no matter where they’re going or when they need to be there. Stay on track and on time.



ITF Group Shares 10 Years in Business with Customers and Staff.





Warehousing & Fulfillment

With 500,000+ square feet of space across 3 distribution centers, our expert fulfillment team has you covered when you need more space and support. As your warehousing and fulfillment partner, we offer safe and secure facilities for your products, 24/7 customer support and room to grow.

Logistics

Let our team connect you with over 40,000 trusted carriers. We've built a network of highly rated carriers to ensure you have the coverage and reach that you need to keep your products moving forward. Our logistics services team is ready to get your freight moving forward, now.

Services Offered:

- Trucking & Transportation
- Logistics Services
- Dedicated Freight
- Warehousing & Fulfillment
- Reverse Logistics
- Kitting and Labeling
- Omni-channel Fulfillment
- Fulfillment by Amazon
- Custom Packaging
- Marketing Inserts
- Virtual Bundling

Areas Served:

- Nationwide





DISTRIBUTORS & CONSOLIDATORS OF AMERICA

Located near St. Louis, MO and Atlanta, GA



Warehouse & Distribution

NOTS Logistics

17848 Mockingbird Road
Nashville, IL 62263
Phone: 800-642-5436
Fax: 618-478-5356
www.otslogistics.com



WAREHOUSING

- Public & Contract Warehousing space
- Customized Warehouse space
- Reverse Logistics
- Returns Processing



TRANSPORTATION

- Shuttle Services
- Specialized Equipment
- Short Haul Round Trip Truckloads



CUSTOMIZED DISTRIBUTION

- Dedicated Route Distribution
- Tailored Distribution Programs
- Pool Distributions / Milk Runs
- Driver & Equipment Leasing



WORKFORCE MANAGEMENT

- Temporary Staffing
- Warehouse and Driver Management Services
- In-house Customized Management Services

Principal Contact:

Kevin J. Brink

Vice President,

Business Development

kevinb@otslogistics.com





New York / New Jersey / Ontario, Canada

SPEED Global Services...

One of the most trusted names in the business for companies that need to ship freight via ground, air, ocean or rail.



Around the corner or around the world...
SPEED Delivers!



SERVICES OFFERED

International Freight Forwarding

- Daily consolidation to major routes and door-to-door rates
- Documentation preparation and filing
- Experienced, customer-focused, single point-of-contact staff
- Import or export air/ocean forwarding
- Letters of credit

Transportation Services

- Direct/next day service to more than 1,000 points in NY, PA and Ontario, Canada
- Cross-border (U.S./Canadian) shipping
- Same-day expedited service
- C-TPAT and FAST express certified with EDI capabilities
- Container drayage
- Local, regional and national LTL & T/L services

Warehousing & Fulfillment

- Over 1.7 million square feet of public and contract warehouse space in Buffalo
- 100,000 square feet warehousing in Linden, NJ
- Realtime online inventory
- Quality inspection
- Dry, clean, temperature-controlled environment
- Freezer and cold storage warehousing
- Foreign Trade Zone (FTZ) CFS/CES
- Inside rail unloading
- Heavy lift and overhead crane capabilities
- North/South - U.S./Canada consolidation
- Cross-dock/forwarding
- GMP Certified
- AG & Market Approved

Principal Contacts:

Carl Savarino
CEO
csavarino@speedgs.com

David Galante
Vice President
dgalante@speedgs.com

Joey Casullo
Director of International
jcasullo@speedgs.com



2299 Kenmore Ave
Buffalo, NY 14217

Phone: 716-876-2235
ext 1700

www.speedgs.com

AREAS SERVED

Worldwide



North Dakota

Midwest Motor Express

5015 East Main Avenue
Bismarck, ND 58502
Phone: 701-223-1880
Fax: 701-224-1405
www.mmeinc.com



Principal Contacts:

John Slavik

Vice President of Sales & Marketing
303-405-3905
or 720-322-0102 ext 2905
john.slavik@mmeinc.com

Mike Labahn

Regional Sales Director
701-224-7178
mike.labahn@mmeinc.com

Midwest Motor Express, Inc. was founded in 1918. We are one of the oldest less-than-truckload carriers operating under the same name utilizing the same quality commitment to our customers for over 100 years. We feel that longevity means stability, and in this ever changing world, one thing our clients can count on is Midwest Motor Express.



Services Offered:

- LTL Services
- Truckload Services
- Pool Distribution
- Import Distribution
- LCL International Services
- In House Customs Brokerage
- Marketing Partner Network
- EDI / API
- Warehousing
- Pick and Pack

Areas Served:

- | | |
|----------------|--------------|
| ■ North Dakota | ■ Missouri |
| ■ South Dakota | ■ Colorado |
| ■ Minnesota | ■ Wyoming |
| ■ Iowa | ■ Montana |
| ■ Wisconsin | ■ Utah |
| ■ Illinois | ■ Idaho |
| ■ Nebraska | ■ Washington |
| ■ Kansas | ■ Oregon |





Ohio

Cleveland Delivery & Distribution

6707 Bessemer Ave
Cleveland, OH 44127
Phone 216-641-7793
Fax 216-641-7796
clevelanddelivery.net

Operations Group:
Ops@clevelanddelivery.net



Services Offered:

- LTL
- Truck Load
- Local PU+D
- Consolidation
- Drayage
- Brokerage
- Cross Dock
- TSA Approved
- Custom Bonded
- Brokerage

Principal Contacts:

President
Thomas Wagner,
216-641-7793 x 201
twagner@clevelanddelivery.net

Cleveland Delivery & Distribution, Inc (CDD) was founded in 1994 as a local Cleveland, OH truck load carrier. Since then we've grown into a midwest regional LTL and truck load carrier.

Operating a 45-door cross-dock facility located near Downtown Cleveland, CDD is positioned perfectly to cover your freight needs. From our 40+ well-trained employees, to our passionate "family-first" ownership group, CDD is the right choice when selecting a partner in transportation.

LTL Direct Areas Served:

Northeast Ohio • Buffalo, NY • Erie, PA

Truck Load Areas Serves:

500 mile radius of Cleveland, OH





Pennsylvania

A. Duie Pyle, Inc.

650 Westtown Road, P.O. Box 564
 West Chester, PA 19381
 Phone 800-523-5020 | Fax 610-350-0406
 www.aduiepile.com

Principal Contact:

RUSS MICELI | Vice President of Integrated Solutions
 rmiceli@aduiepile.com

INTEGRATED SUPPLY CHAIN SOLUTIONS PROVIDER

A. Duie Pyle is the Northeast's premier transportation and logistics provider offering Less-Than-Truckload (LTL) service and extended coverage through established partnerships in the US and Canada. A family-owned business since 1924 and ideally equipped to service the congested Northeastern metropolitan region, A. Duie Pyle provides a range of integrated transportation and distribution services supported by 27 LTL service centers and 18 warehouse facilities comprised of over 4.4 million square feet of space. Whether it is LTL, Dedicated fleet operations, Brokerage Solutions truckload needs or Warehousing & Distribution services, A. Duie Pyle's flexibility, depth of resources and diverse capabilities enable our customers to source and seamlessly integrate one or multiple supply chain solutions with a single point of accountability.



A Proud "Quest For Quality" Recipient Since 1989

SOLUTIONS DESIGN

- Complete Supply Chain Analysis
- Customized Plan Meeting Your Unique Needs
- Opportunity to Source Multiple Services

LTL

- Guaranteed Expedited - Pyle Priority Service
- Express Solutions
- Pool Distribution/Inbound Consolidation

DEDICATED

- Fleet Management & Supplementation
- Equipment Purchase, Lease Assumption
- Route Optimization for More Efficient Deliveries

BROKERAGE

- Nationwide, Regional & Canada
- Same Day, Next Day & By Appointment
- Specialized Equipment & Services

WAREHOUSE & DISTRIBUTION

- 18 Strategically Located Northeast Facilities
- Highway, Port, Rail & Intermodal
- Fulfillment Center Capabilities



Pennsylvania

Maple Logistics Solutions

Headquarters:

60 Grumbacher Road
York, PA 17406

Mailing Address:

PO Box 15100
York, PA 17405
(717) 764-4596
www.MapleLogisticsSolutions.com
info@maplesoln.com

Principal Contact:

Sales Inquiries
(717) 764-4596
info@maplesoln.com

Locations:

York, PA
Lebanon, PA
Mount Joy, PA



Services Offered:

- Warehousing
- Fulfillment
- Food Grade
- Pick and Pack
- Inventory Management
- Kitting and Assembly
- E-Commerce Services
- Export Consolidation
- Premium and custom packaging
- Online inventory, receipts, and tracking information 24/7
- Reverse Logistics
- Rework Services
- Full EDI Capability

Areas Served:

- North America, Worldwide





DISTRIBUTORS & CONSOLIDATORS OF AMERICA

Daca in Canada





Ontario



Polaris Transportation Group

Headquarters:

7099 Torbram Road
Mississauga, ON, Canada L4T 1G7
Toll Free Tel: 1-800-409-2269
polaristransport.com

Principal Contact:

Dave Cox, President
Ext. 1226, dave@polaristransport.com
Gary Nicholson, General Manager Global Logistics
Ext 1265, gary@thinkpgl.com
Dave Bochna, VP Business Development
Ext. 1234, daveb@polaristransport.com

Company Profile:

Polaris Transportation is an asset-based cross-border LTL carrier with daily departures between CAN & the USA. They specialize in shipping dry goods and offer industry-leading transit times to and from all points in the USA, including next-day LTL deliveries to select cities.

The Polaris Transportation Group comprises four operating divisions that are not only leading providers of cross-border LTL but also global logistics, warehousing & distribution and digital development. Their third-party logistics division (PGL) boasts a seasoned team of logistics professionals and a hand-picked partner carrier network to deliver expanded services worldwide. With warehouse facilities in Toronto, ON, Polaris manages incoming shipments and can effectively distribute to anywhere in CAN & the USA. They offer a full menu of services from pick & pack, sorting, display assembly, co-packing for e-commerce to fulfillment and distribution by courier, LTL or truckload carriers. Their specialists handle diverse commodities such as CPG, bulk, medical devices, industrial and commercial products.

Polaris' technology company, NorthStar Digital Solutions, is committed to developing cutting-edge innovations including artificial intelligence, robotic process automation, distributed ledger and smart contract process.



Services Offered:

- Asset-based LTL USA/CND cross-border carrier
- Next day LTL service between Toronto (GTA) and Boston, NY, NJ, Chicago, Cleveland, Cincinnati & Columbus
- Third-party cross-border and domestic freight management
- Secure warehousing facilities for long and short-term storage
- Order fulfillment and distribution
- Specialized hazmat transport, warehousing and distribution
- Expedited ground (LTL + TL) and air services
- Global air and ocean freight forwarding
- Movement of trade-show displays and exhibits
- In-house digital laboratory offering technology services

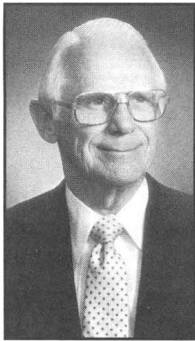
Areas Served:

- USA and Canada





Over 50 Years of DACA



Ira P. Jones

DACA was formed on November 17, 1971. A dozen transportation executives from around the country, interested in distribution and consolidation, sat down in a Dallas hotel and formulated the guidelines for an organization that eventually came to be known as Distributors and Consolidators of America.

Ira P. Jones, a long-time Texas trucking executive of Southwest Freight Distributors in

Dallas, TX, was the guiding force in DACA's infancy. He envisioned a bright future for the consolidation and distribution of a variety of goods, primarily for the retail trade.



The DACA organization is here to serve you, the customer, with the utmost integrity, honesty and quality. Choose DACA for all your transportation, logistics and warehousing needs!

DACA Executive Officers

Title	Name	Company
President	Lori Hooper	Frontline Freight
Vice-President	Kevin Nevison	Davis Cartage
Secretary	Cassie Stang	King Solutions
Treasurer	Russ Miceli	A. Duie Pyle, Inc.
Chairman	Steve Hartmann	Lynden Transport
Past President	Mike Moran	Moran Transportation
Past President	David Galante	Speed Global
Past President	Kevin Brink	NOTS Logistics
Past President	Raymond Rodriguez	Honolulu Freight

Board of Directors

Term	Name	Company
2022 - 2025	Russ Miceli	A. Duie Pyle, Inc.
2020 - 2021	Chris Benyovszky	Maple Logistics
2021 - 2023	Cassie Stang	King Solutions
2021 - 2023	Kevin Nevison	Davis Cartage



DACA Past Presidents

1972 – John Wagner, Jr.

Wagner Industries
Kansas City, MO

1973 – Ira P. Jones

Southwest Freight Distributors
Dallas, TX

1974-75 – A.J. “Tony” Naples

Tarcon, Inc.
Charlotte, NC

1974-77 – John J. Matthews

OK Delivery System
Portland, OR

1978-79 – Mike Connor

Detroit Transfer Co.
Detroit, MI

1980-81 – Willard Carlisle

Florida LTL Distribution
Orlando, FL

1982-83 – Joe M. Lock

Leonard Brothers
Transportation Co.
Kansas City, MO

1984 – Brad Rowland

Dry Storage Corp.
Chicago, IL

1985-86 – Pat McCanta

Western Cartage
Seattle, WA

1987-88 – Wayne Spain

Averitt Express
Nashville, TN

1989-90 – Bill Nelson

Hess Trucking Company
Hershey, PA

1991-92 – Rich Eberhart

Southwest Freight Distributors
Dallas, TX

1993-96 – Jim Latta, III

A. Duie Pyle, Inc.
West Chester, PA

1997-98 – Bob Kortenhaus, Sr.

Bilkays Express
Elizabeth, NJ

1998-99 – Carl Savarino

Speed Global Services
Buffalo, NY

2000-2001 – Mark Reimer

Freightmasters, Inc.
Eagan, MN

2002-2003 – Kevin J. Brink

NOTS Warehouse & Distribution
Services
St. Louis, MO

2004-2005 – Mark Anness

Kid Glove Service, Inc.
Indianapolis, IN

2006-2007 – Michael Wichert

Cal State Xpress
South Gate, CA

2008-2009 – Rich Brown

Minneapolis, MN

2010-2011 – David Galante

Speed Global Services
Rochester, NY

2012-2013 – Michael Oliver

Lynden Transport, Inc.
Seattle, WA

2014-2015 – Andy Delaney

Capitol Express & Warehousing
Jessup, MD

2016-2017 – Mike Moran

Moran Transportation Corp.
Chicago, IL

2018-2019 – Raymond Rodriguez

Honolulu Freight Service
Montebello, CA

2020 – 2021 - Steve Hartman

Lynden Transport, Inc.
Seattle, WA

2022-2023 - Lori Hooper

Frontline Freight, Inc..
Santa Fe Springs, CA



DACA Membership

2022
ITF Group

2017
Davis Cartage

2016
Cleveland Delivery

2014
Automated Logistics Services

2013
Frontline Freight

2012
Polaris Transport Carriers

2011
Maple Logistics Solutions

2008
Midwest Motor Express

2007
King Solutions

2006
Honolulu Freight Service

2003
Lynden Transport
Capitol Express and Warehousing

1999
Moran Transportation

1998
Fowler's Express

1997
NOTS Logistics

1996
Speed Transportation

1991
A Duie Pyle, Inc.

CAN EVERYONE ON YOUR TEAM
SOLVE THIS?

$$ICC = \frac{C + T + I + W + X + (S - R1) + (O - R2)}{\text{Annual \$ Material Cost}}$$

If not, they should be reading this.

Spread the good news by getting your vendors,
partners, and team members reading *Inbound Logistics*.
Point them to inboundlogistics.com/subscribe

**inbound
logistics**
a THOMAS company



ICC=inventory carrying costs C=capital T=taxes I=insurance W=warehouse costs X=shrinkage S=scrap O=obsolescence costs R=recovery



2023 Trade Shows DACA will be attending

TIA (Transportation Intermediaries Association)

When: April 19 ~ 22, 2023

Where: Loews Royal Pacific Resort, 6300 Hollywood Way, Orlando, FL 32819

Website: www.tianet.org

Booth Number: 800

NACD ChemEdge Tradeshow

When: August 16 ~ 18, 2023

Where: The Woodlands, TX

Website: www.nacd.com

Booth Number: 10

Council of Supply Chain Management Professionals (CSCMP)

When: October 1 ~ 4, 2023

Where: Gaylord Palms Resort, 6000 West Osceola Parkway, Kissimmee, FL 34746

Website: www.cscmp.org

Contact: Krissy Scordato - 630-645-3464 | kscordato@cscmp.org

Booth Number: TBD

Distributors & Consolidators of America

2240 Bernays Drive
York, PA 17404

PRINTERS
INDICIA



DISTRIBUTORS & CONSOLIDATORS OF AMERICA

A North American Network of asset based companies providing consolidation, distribution, warehousing, transportation and 3PL solutions.



Distributors & Consolidators of America

717-764-6531

www.dacacarriers.com

North American Transportation and Distribution Network